



The most common environments that **phs** can help solve problems on your floors



● Corridors, lifts and vending

● Washroom

● Manufacturing area

● Commercial kitchen

● Slip testing service

● Changing room

● Entrance and reception

● Sanitiser dispensers

● Wet matting area



Contents

| | |
|--|----|
| Sustainable Hygiene mats | 08 |
| Loose-lay Lift and Lay matting solutions | 10 |
| Planet Range | 11 |
| Printed plain colour | 12 |
| Logo / image mats | 13 |
| Outdoor rubber logo mat | 14 |
| Outdoor premium logo mat | 15 |
| Tuff mats | 16 |
| Eco standards | 17 |
| Hand dryer mats | 18 |
| Ultra plus mats | 20 |
| Lead Times | 21 |
| Hygiene message mats | 22 |
| Workplace office mats | 23 |
| Shaped mats | 24 |
| PPE message mats | 25 |
| Comfort mats – anti-fatigue | 26 |
| Ultraflow mats – anti-fatigue | 27 |
| Premium anti-fatigue indoor mats | 28 |
| Slip Safety Service | 29 |
| Wet area matting | 30 |
| Fitted Lift and Lay matting solutions | 32 |
| Logo/Image - fitted | 33 |
| Ultra Plus - Fitted | 34 |
| Planet Range - Fitted | 35 |
| Plain Colours - Fitted | 36 |
| Lift car mats logo/image | 37 |
| Permanent fitted matting solutions | 38 |
| Forma HD – plain & logo | 39 |
| Quadra HD – plain & logo | 40 |
| Tergo HD | 41 |
| Foris – fitted | 42 |
| Smart Step Loop | 43 |
| Megahold | 44 |
| Fixed entrance mat cleaning | 45 |
| Work Matta | 46 |

Why mats?

51% of plaintiffs win liability claims for slips and falls

Source: Jury Verdict Research



Source: International Workplace

90% of slips occur when the floor is wet

Source: HSE



Source: Dept. of Environment

Slips, trips and falls are the most common injury to employees

Source: HSE

40% of any cleaning budget is used to clean the floors

Source: Carpet and Floor Covering Review

Benefits of serviced matting

- > **Image** and brand awareness.
- **Reducing** cleaning time and cost on site.
- **Protecting** floors from premature damage.
- **Preventing** slips and trips - legal requirement.
- **Being** better than your rival across the street!
- **Cleaner** floors - improves image.
- **Drier** floors - prevent slips.
- **Health** and safety compliant.
- **Storing** foot-borne dirt and removing from premises.

Sustainable hygiene mats



As the leading hygiene services provider in the UK, Ireland, and Spain, you can count on **phs** Group to do the right thing.

And, with over 120,000 customers relying on us across 300,000 locations to help make being green as much a part of their day-to-day operations as it is ours, we believe it's our responsibility to set benchmarks for standards, drive change and innovate. **Made from ECONYL**

To help contribute to your environmental and ecological credentials, phs floor mats are made from **ECONYL** yarn.

ECONYL regenerated nylon is made by recovering nylon waste. This includes fishing nets dredged from the oceans and aquacultures that would otherwise be left to pollute the ocean. As well as fabric and carpet scraps from mills, that would otherwise be destined for landfill.

So, our mats are not only helping keep our customers floors clean, but they are also helping to clean up the oceans too.



DID YOU KNOW?

640,000 tonnes of fishing nets are abandoned in our oceans each year, trapping and killing wildlife and damaging reefs



Loose-lay Lift and Lay matting solutions



Planet Range



Our planet range of mats offer limitless design opportunities. From creating a complete brand experience, to providing additional health and safety signage.

Key features:

- New pattern developed to compliment dark grey, blue, brown and red in our forma and foris colour range
- Can be used as a patterned mat or logo mat
- Please note that the planet range of fleck patterned colours are not an exact match to our Forma and Foris range of colours due to the different textile used in the product
- Available in any bespoke size up to 4.02sqm (loose-lay) and up to 3.9sqm (fitted)

| Options: | |
|--------------------------------------|----------|
| Planet Range - Loose Lay - 120 x 85 | 17035168 |
| Planet Range - Loose Lay - 150 x 85 | 17035170 |
| Planet Range - Loose Lay - 180 x 115 | 17035181 |
| Planet Range - Loose Lay - 240 x 115 | 17035193 |
| Planet Range - Loose Lay - 240 x 150 | 17035200 |
| Planet Range - Loose Lay - 350 x 115 | 17035211 |
| Planet Range - Loose Lay - 120 x 85 | 17035223 |
| Planet Range - Loose Lay - 150 x 85 | 17035235 |
| Planet Range - Loose Lay - 180 x 115 | 17035247 |
| Planet Range - Loose Lay - 240 x 115 | 17035259 |
| Planet Range - Loose Lay - 240 x 150 | 17035260 |
| Planet Range - Loose Lay - 350 x 115 | 17035272 |

Also available fitted in any matwell upto 3.9sqm

Please Note: 10cm is added to the size of each mat in both directions as standard procedure by the logo's team to give the fitter the material required to cut.

Maximum width or length is 185cm you can go any size in the opposite direction as long as you are within 3.9sqm.

Also available in a fitted lift and lay mat option.



Printed plain colour mats

Same price as logo mats



- Avoid using light colours for backgrounds, as mats are placed on the floor and therefore must be practical

Key features

- Standard service is 26 p.a. (fortnightly)
- Monthly (13p.a) & weekly (52p.a.) available
- Backing = 100% nitrile rubber
- Total thickness = 9mm
- Fire resistance = Cfl s1
- 18mm anti trip rubber border all around
- Bespoke mats i.e. dedicated stock
- Antistatic = <2kV
- BS8300 / DDA / ADA compliant
- Gripper or smooth backed
- DMS backing for heavy weight smooth backing
- 100 colour choices
- Bespoke sizes are available up to max. 4.02sqm
- Indoor use only

Available options

| Backing options: | | Gripper or smooth | DMS backed smooth only |
|------------------|--------------------|-------------------|------------------------|
| 120cm x 85cm | 1.02m ² | 4 x 3 | 107950 |
| 150cm x 85cm | 1.27m ² | 5 x 3 | 107951 |
| 180cm x 115cm | 2.07m ² | 6 x 4 | 107952 |
| 240cm x 115cm | 2.76m ² | 8 x 4 | 107953 |
| 240cm x 150cm | 3.60m ² | 8 x 5 | 107954 |
| 350cm x 115cm | 4.02m ² | 12 x 4 | 107955 |



Logo / image mats



Key features

- Standard service is 26 p.a. (fortnightly)
- Monthly (13p.a) & weekly (52p.a.) available
- Backing = 100% nitrile rubber
- Total thickness = 9mm
- Fire resistance = Cfl-s1
- 18mm anti-trip rubber border all around
- Bespoke mats i.e. dedicated stock
- Antistatic = <2kV
- BS8300 / DDA / ADA compliant
- Gripper or smooth backed
- DMS backing for heavy weight smooth backing
- 100 colour choices
- Bespoke sizes are available up to max. 4.02sqm
- Only use dark practical background colours
- Indoor use only



Available options

| Backing options: | | |
|------------------|--------------------|--------|
| 120cm x 85cm | 1.02m ² | 4 x 3 |
| 150cm x 85cm | 1.27m ² | 5 x 3 |
| 180cm x 115cm | 2.07m ² | 6 x 4 |
| 240cm x 115cm | 2.76m ² | 8 x 4 |
| 240cm x 150cm | 3.60m ² | 8 x 5 |
| 350cm x 115cm | 4.02m ² | 12 x 4 |



- Avoid using light colours for backgrounds, as mats are placed on the floor and therefore must be practical

Outdoor rubber logo mat

Outdoor Rubber Logo Mats feature your custom logo or artwork overlaid onto a comfort mat.

Multicolor images are created by molding a digitally printed polymeric material into the durable nitrile rubber surface of the mat.



SPECIFICATIONS

RUBBER

100% Nitrile EXS™
thickness 2,9mm

TOTAL WEIGHT

5,20 kg/m²

THICKNESS

3mm
13pa or 26pa

Available options

| Mat size | Max logo size | Code |
|------------|---------------|----------|
| 75x85cms | 55x65 | 17034851 |
| 85x150cms | 65x130 | 17034863 |
| 115x180cms | 95x160 | 17034875 |

Size Tolerance: +/- 5%



High Definition

Photographic quality images are printed on thermoplastic material and molded into rubber



Textured slip resistant surface
effectively removes dirt and soil.



100% Nitrile EXSTM Rubber
resistant to chemicals, greases and oil.



80 standard colour options



True outdoor mat
no shelter required



Outdoor premium logo mat

Outdoor premium logo mats feature your custom logo or artwork on durable nylon monofibers. Combine maximum of 3 colours for the artwork.



SPECIFICATIONS

YARN

Coarse continuous filament Solution Dyed Nylon

CARPET WEIGHT

1.300 g/m²

RUBBER

100% Nitrile EXS™
thickness 2,9mm

TOTAL WEIGHT

5,20 kg/m²

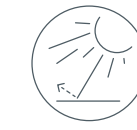
13pa or 26pa



Durable Nylon Brush monofibers
make for excellent scraping action.



Drainage holes allow for excellent drainage



Solution Dyed fibers
for 100% UV-resistance.



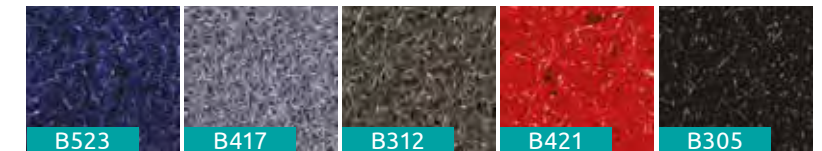
Bleach and chemical resistant.



5 Colours
to choose from



True outdoor mat
no shelter required



Available options

Premium Mat

| Mat size | Code |
|------------|----------|
| 75x85cms | 17034899 |
| 80x120cms | 17034905 |
| 85x150cms | 17034693 |
| 85x300cms | 17034700 |
| 120x180cms | 17034711 |
| 120x200cms | 17034723 |

Premium Logo Mat

| Mat size | Code |
|------------|----------|
| 75x85cms | 17034760 |
| 80x120cms | 17034772 |
| 85x150cms | 17034784 |
| 85x300cms | 17034796 |
| 120x180cms | 17034802 |
| 120x200cms | 17034814 |

Maximum 3 colours per design
Size Tolerance: +/- 2%
Bespoke sizes available
Max size 2.4sqm



Tuff mats – canopy

Must be under a canopy



TUFF MAT in situ, must be used under a canopy if being used externally

Key features

- Standard service is 26 p.a. (fortnightly)
- Monthly (13p.a) & weekly (52p.a.) available
- Backing = 100% nitrile rubber
- Total thickness = 10mm
- Fire resistance = Dfl-s1
- 21mm anti-trip rubber border all around
- Yarn = 100% ECONYL®
- BS8300 / DDA / ADA compliant
- Bespoke mats i.e. dedicated stock
- External use under a canopy only
- Do not place in direct rainfall



Tuff Mat texture sample - grey only

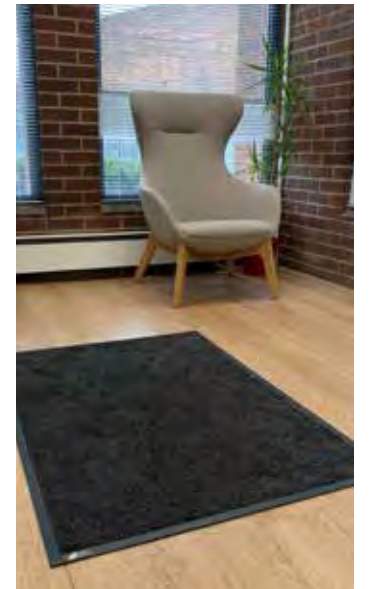


Available options

| Colour options: | | Grey | |
|-----------------|--------------------|--------|--------|
| 150cm x 85cm | 1.27m ² | 5 x 3 | 003963 |
| 200cm x 115cm | 2.3m ² | 7 x 4 | 003964 |
| 300cm x 85cm | 2.55m ² | 10 x 3 | 006925 |

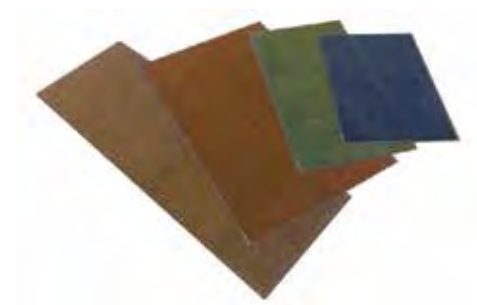
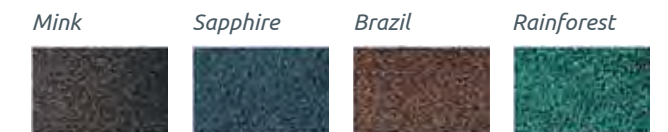


Eco standards



Key features

- Standard service is 26 p.a. (fortnightly)
- Monthly (13p.a) & weekly (52p.a.) available
- Backing = 100% nitrile rubber
- Total thickness = 9mm
- Fire resistance = Cfl s1
- 18mm anti trip rubber border all around
- Antistatic = <2kV
- Yarn = 100% ECONYL®
- BS8300 / DDA / ADA compliant
- Indoor use only



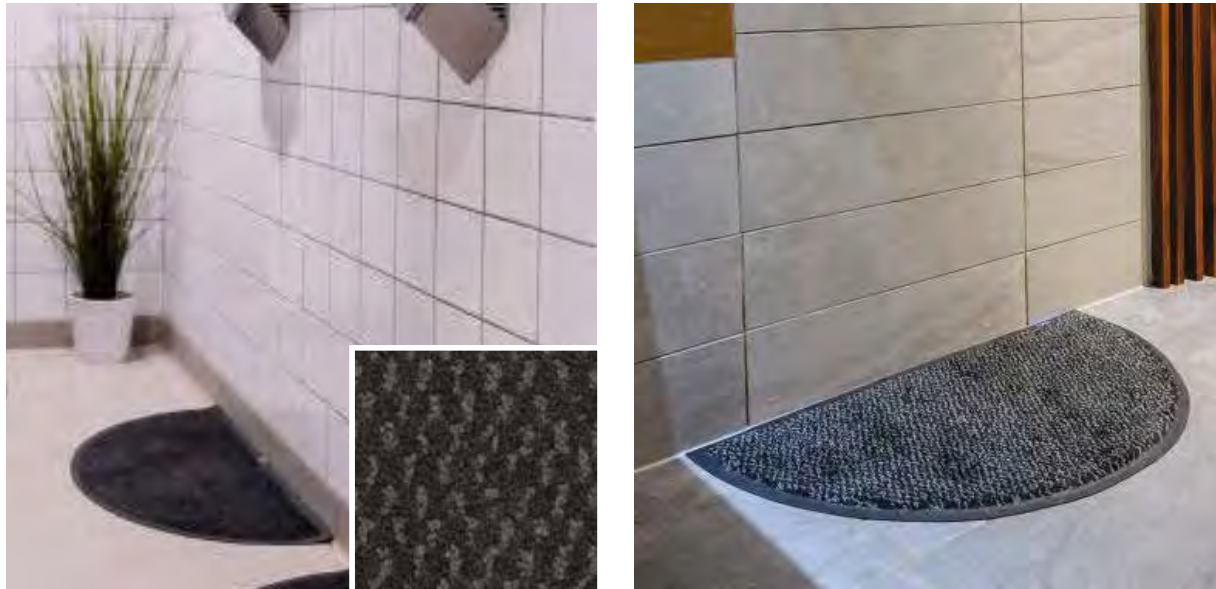
Available options

| Cm | Sqm | Feet |
|----------------|--------------------|--------|
| 120cm x 85cm | 1.02m ² | 4 x 3 |
| 150cm x 85cm | 1.27m ² | 5 x 3 |
| 180cm x 115cm | 2.07m ² | 6 x 4 |
| 240cm x 85cm* | 2.04m ² | 8 x 3 |
| 240cm x 115cm* | 2.76m ² | 8 x 4 |
| 350cm x 115cm | 4.02m ² | 12 x 4 |



Hand dryer mats

Roller towel cabinet mat



Key features

- Standard service is 13 p.a. (Monthly)
- Fortnightly (26p.a.) available
- Backing = 100% nitrile rubber
- Total thickness = 10-11mm
- Fire resistance = Dfl-s1
- 18mm anti-trip rubber border all around
- Antistatic = <2kV
- Yarn = 100% ECONYL®
- BS8300 / DDA / ADA compliant
- Bespoke mats i.e. dedicated stock
- Colours: graphite only
- Smooth backed only for hard floor only
- 32% more soil/moisture capture than standards
- Ideal hand dryer mat for use in washrooms
- Also ideal roller towel cabinet mat
- Heavy duty micromix pile 66%/33%
- Internal use only

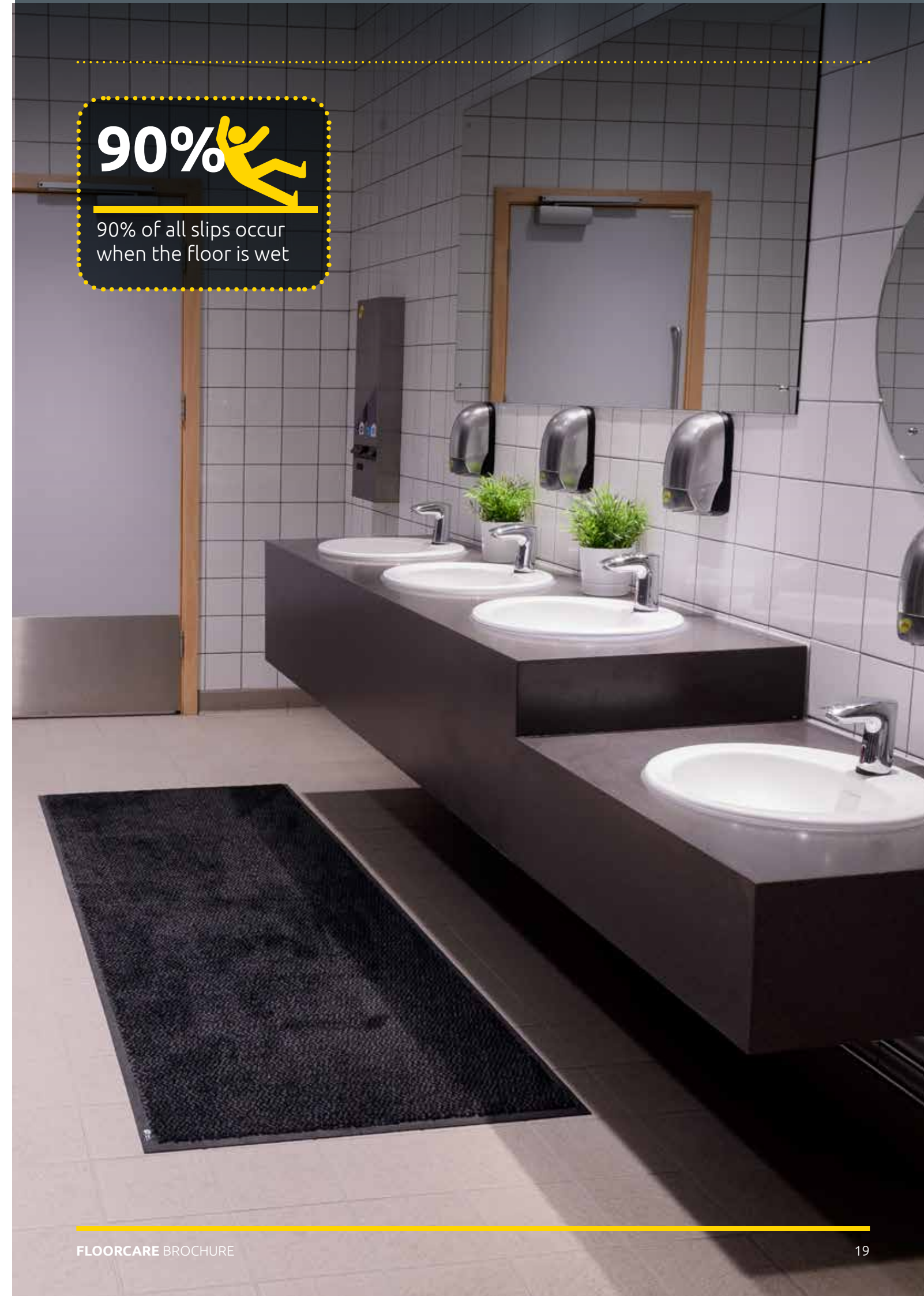
Available options

| Backing options: | | Graphite colour only | |
|------------------|-------------|----------------------|----------|
| Small | 60cm x 30cm | Semi-circular | 17026763 |
| Large | 85cm x 42cm | Semi-circular | 17022812 |

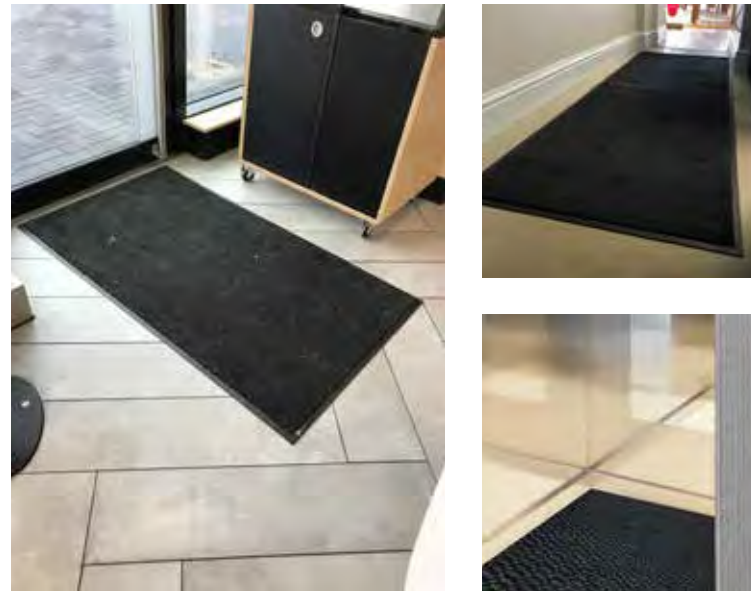
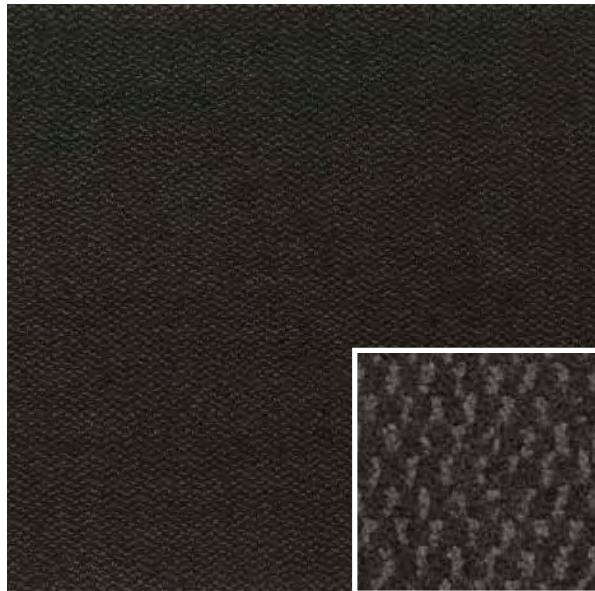
poor solution underneath hand dryers



90% 
90% of all slips occur when the floor is wet



Ultra plus mats



Also available in a fitted lift and lay mat option.

Key features

- Standard service is 26 p.a. (fortnightly)
- Monthly (13p.a.) & weekly (52p.a.) available
- Backing = 100% nitrile rubber
- Total thickness = 10-11mm
- Fire resistance = Dfl-s1
- 20mm anti-trip rubber border all around
- Antistatic = <2kV
- Yarn = 100% ECONYL®
- BS8300 / DDA / ADA compliant
- Colours: graphite only
- Gripper or smooth backed choice
- 32% more soil/moisture capture than standards
- Ideal sink mat for use in washrooms
- Heavy duty micromix pile 66%/33%
- Indoor use only

Product Specification

| | |
|-----------|--|
| Sizes | 120x85cm, 150x85cm, 180x115cm, 240x85cm, 350x115cm |
| Thickness | 7-12mm |
| Colour | Graphite Grey |



Available options

| Backing options: | | | | Gripper or smooth |
|---|--------------------|--------|----------|-------------------|
| Bespoke Ultra Plus Loose-Lay – 120cm x 85cm | 1.02m ² | 4 x 3 | 17036148 | |
| Bespoke Ultra Plus Loose-Lay – 150cm x 85cm | 1.27m ² | 5 x 3 | 17036150 | |
| Bespoke Ultra Plus Loose-Lay – 180cm x 115cm | 2.07m ² | 6 x 4 | 17036161 | |
| Bespoke Ultra Plus Loose-Lay – 240cm x 115cm | 2.76m ² | 8 x 4 | 17036173 | |
| Bespoke Ultra Plus Loose-Lay – 240cm x 150cm | 3.60m ² | 8 x 5 | 17036185 | |
| Bespoke Ultra Plus Loose-Lay – 350cm x 115cm | 4.02m ² | 12 x 4 | 17036197 | |
| Standard Ultra Plus Loose-Lay – 85cm x 60cm | 0.51m ² | 4 x 2 | 17023397 | |
| Standard Ultra Plus Loose-Lay – 120cm x 85cm | 1.02m ² | 4 x 3 | 17022848 | |
| Standard Ultra Plus Loose-Lay – 150cm x 85cm | 1.27m ² | 5 x 3 | 17022850 | |
| Standard Ultra Plus Loose-Lay – 180cm x 115cm | 2.07m ² | 6 x 4 | 17022861 | |
| Standard Ultra Plus Loose-Lay – 240cm x 85cm | 2.04m ² | 8 x 3 | 17022873 | |
| Standard Ultra Plus Loose-Lay – 350cm x 115cm | 4.02m ² | 12 x 4 | 17022885 | |

Maximum width is 150cm you can go any size in the opposite direction as long as you are within 3.9sqm. Also available fitted in any matwell upto 3.9sqm

32% more absorbent than a standard mat

Floorcare availability and lead times

Eco standard mats

120x85, 150x85, 180x115, 350x115



Up to 10 days | Qty Over 25 | 5 weeks mobilisation call

Tuff. Ultra Comfort. Ultraflow



Up to 10 days | Qty Over 25 | 5 weeks mobilisation call

Hand dryer mats



Up to 10 days | Qty Over 25 | 5 weeks mobilisation call

Logo mat

Plain mats 150 colour choice



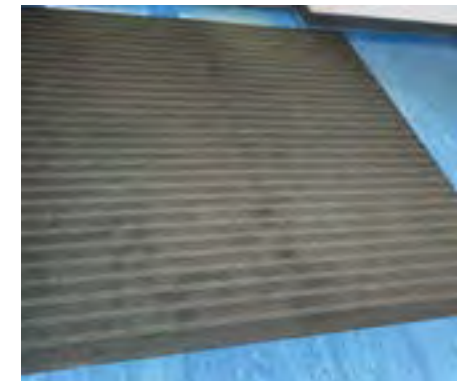
Lead time: 4 weeks

Wet area matting



Lead time: 3-4 weeks

Principal mats



Lead time: 6 weeks

Outdoor mats



Lead time: 6 weeks

Forma and Foris mats

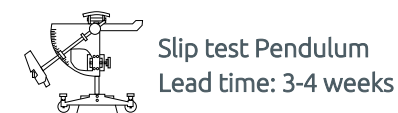


Lead time: 5-6 weeks

Fitted logo, Plain colour, Ultra Plus and Principal mats



Lead time: 5-6 weeks



Hygiene message mats



Help remind people to sanitise and wash their hands with our new hygiene message mats, as well as protect floors from premature damage and prevent slips.



Key features

- Standard service is 26p.a. (fortnightly).
- Monthly (13p.a.) and weekly (52p.a.) available.
- Backing = 100% nitrile rubber.
- Total thickness = 9mm.
- Fire resistance = Cfl-s1.
- 18mm anti-trip rubber border all around.
- Antistatic = <2kV.
- BS8300 / DDA / ADA compliant.
- Gripper or smooth backed.
 - Square or rectangular mats are available in gripper or smooth backing.
 - Semi circular mat is available in smooth backing only and is for smooth floors only.
- Internal use only.
- Bespoke designs available.

Advanced laundering

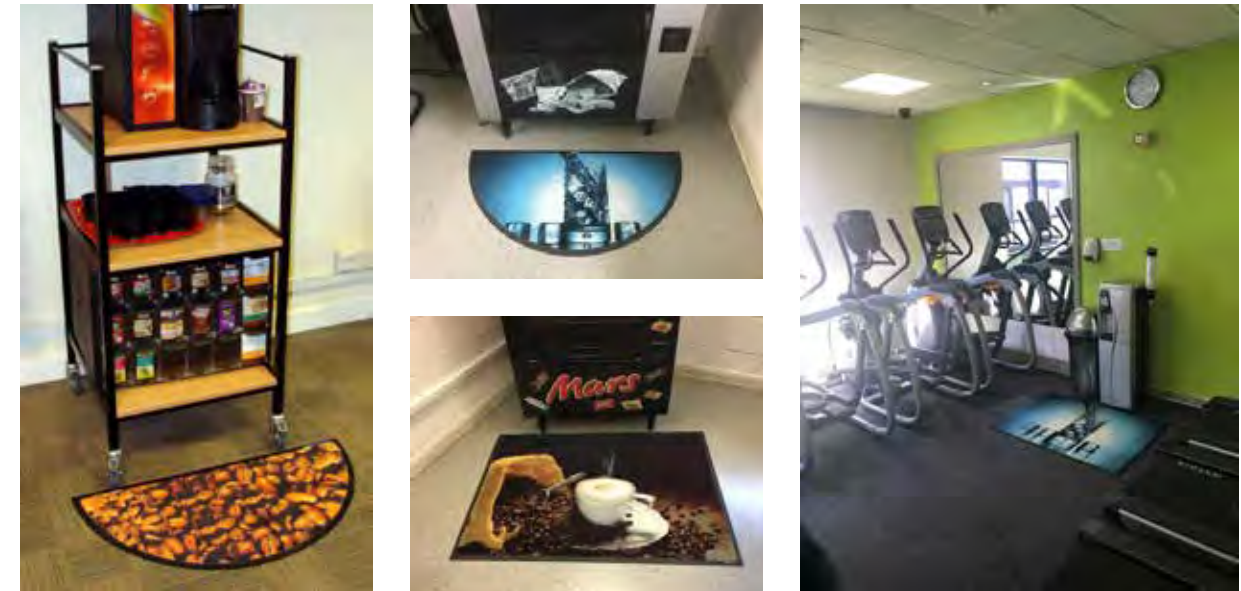
Mats are thoroughly deep cleaned to remove all moisture, dirt and grit, so they're returned to you looking bright, smart and rich in colour.

Available options

| Wash hands mat | Sanitiser mat | Semi circular mat |
|--|---------------|-------------------|
| use the same code as a normal logo mat | | 17033238 |
| 150 x 85 | 85 x 85 | 85 x 42 |

Bespoke sizes and colours also available if required.

Workplace office mats



Rectangular mats available in smooth or gripper back.
Semi-circular mats available in smooth back only for hard surface only.

Key features

- Standard service is 26 p.a. (fortnightly)
- Monthly (13p.a.) & weekly (52p.a.) available
- Backing = 100% nitrile rubber
- Total thickness = 9mm
- Fire resistance = Cfl s1
- 18mm anti trip rubber border all around
- Bespoke mats i.e. dedicated stock
- Antistatic = <2kV
- BS8300 / DDA / ADA compliant
- Rectangles = gripper or smooth backed
- Semi circular = smooth backed only
- Indoor use only

Available options

| Backing options: | Shape | Smooth or gripper | Smooth backed only |
|------------------|--------------|-------------------|--------------------|
| Water cooler mat | 120cm x 85cm | Square | 17022824 |
| Coffee Vend mat | 120cm x 85cm | Square | 17022836 |
| Water cooler mat | 42cm x 85cm | Semi | 17023440 |
| Coffee Vend mat | 42cm x 85cm | Semi | 17023452 |



DID YOU KNOW?

90% of slips occur when the floor is wet. Hand sanitiser can make the surface more slippery than water.



LIFT & LAY SERVICE



BS8300 COMPLIANT

Shaped mats



ECONYL
Made with 100% Regenerated Nylon

Help to remind people to follow instructions in your facility as well as protect floors from premature damage and slips with our new circular message mats.

Key features:

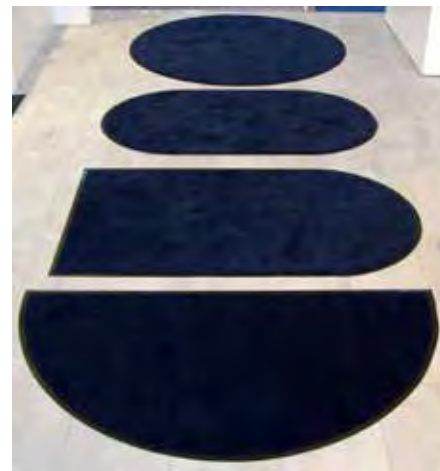
- Available in 60cm diameter (minimum order of 4)
- 4 core designs for 60cm mats
- Available in 85cm diameter
- Bespoke messaging available in 85cm mats only
- Beneficial to your facility for highlighting necessary measures in place
- Easy to move to different locations around your facility
- Will fit in any area



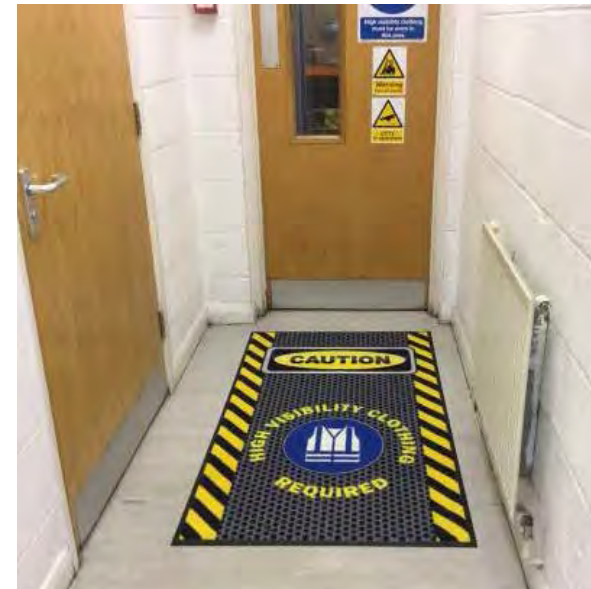
Available options

Backing options:

| | |
|---|----------|
| Semi Oval - Loose Lay - 85cm x 150cm | 17036290 |
| Semi Oval - Loose Lay - 115cm x 200cm | 17036306 |
| Semi Oval - Loose Lay - 150cm x 250cm | 17036318 |
| Oval - Loose Lay - 85cm x 150cm | 17036320 |
| Oval - Loose Lay - 115cm x 200cm | 17036331 |
| Oval - Loose Lay - 150cm x 250cm | 17036343 |
| Circular - Loose Lay - 85cm x 85cm | 17036355 |
| Circular - Loose Lay - 115cm x 115cm | 17036367 |
| Semi-Circular - Loose Lay - 115cm x 57cm | 17036379 |
| Semi-Circular - Loose Lay - 150cm x 75cm | 17036380 |
| Semi-Circular - Loose Lay - 200cm x 100cm | 17036392 |



PPE message mats



Key features

- Standard service is 26 p.a. (fortnightly)
- Monthly (13p.a.) & weekly (52p.a.) available
- Backing = 100% nitrile rubber
- Total thickness = 9mm
- Fire resistance = Cfl s1
- 18mm anti trip rubber border all around
- Bespoke mats i.e. dedicated stock
- Antistatic = <2kV
- BS8300 / DDA / ADA compliant
- Gripper or smooth backed
- 12 standard design choices
- Other designs available
- Indoor use only

Available options

| Portrait | | Smooth or gripper | |
|----------|--------------------|-------------------|----------|
| 150 x 85 | 1.27m ² | 5 x 3 | 17026258 |

| High visibility | Safety footwear | Wet floor | Fork lift trucks |
|------------------|------------------|------------------|------------------|
| | | | |
| Hard hat | Hair nets | Eye protection | Hearing protect |
| | | | |
| Highly flammable | No food or drink | No mobile phones | No access |
| | | | |



Comfort mats – anti-fatigue



Comfort and Ultraflow anti-fatigue mats are really useful in engineering environments where swarf is a problem.

Tip: think of all the locations where staff are required to stand for long periods, there could be many.

Key features

- Standard service is 13 p.a. (monthly)
- Fortnightly (26 p.a.) available
- Nitrile foamed rubber
- Total thickness = 8mm
- Fire rating = UL94 HBF
- Reduces leg fatigue and noise
- Antistatic properties
- APMA approved
- Helps address work related illness and injuries
- Impervious to chemical & oil based products
- Colour = Black
- Closed construction
- Internal use only

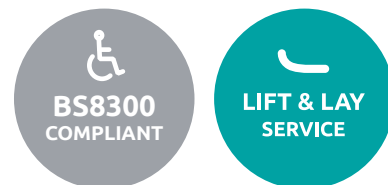
Employees standing up all day in areas like check-out stations, service counters, and assembly lines or behind bars need physical support to keep motivation and energy. The Comfort anti-fatigue mat concept is specially designed for safety, comfort and protection.

- Made from premium quality nitrile rubber, comfort mats are water resistant and resilient to impact.
- Can be transformational for employees who have to stand for long periods reducing leg fatigue and noise.

Comfort mats can be more competitively priced by offering at lower service intervals (i.e. 13p.a.).

Available options

| Backing options: | | Foamed rubber | |
|------------------|--------------------|---------------|--------|
| 84cm x 60cm | 0.50m ² | 3 x 2 | 003961 |
| 140cm x 84cm | 1.17m ² | 5 x 3 | 003962 |
| 180cm x 120cm | 2.16m ² | 6 x 4 | 005829 |
| 300cm x 85cm | 2.70m ² | 8 x 4 | 005831 |



Ultraflow mats – anti-fatigue



Tip: think of all the locations where staff work in wet conditions. Good for use externally in direct rainfall areas i.e. schools as a scraper mat.

Key features

- Standard service is 13 p.a. (monthly)
- Fortnightly (26 p.a.) available
- Total thickness = 8mm
- Fire rating = UL94 HBF
- Reduces leg fatigue & lower back pain
- Antistatic properties
- Excellent slip resistance in wet areas
- Helps address slips and trips at work
- Impervious to chemical & oil based products
- Anti microbial properties
- Colour = Black
- Open construction for drainage

Providing extra support for employees standing on their feet for prolonged periods, Ultraflow mats are a comfort mat especially designed for wet areas such as bars and kitchens.

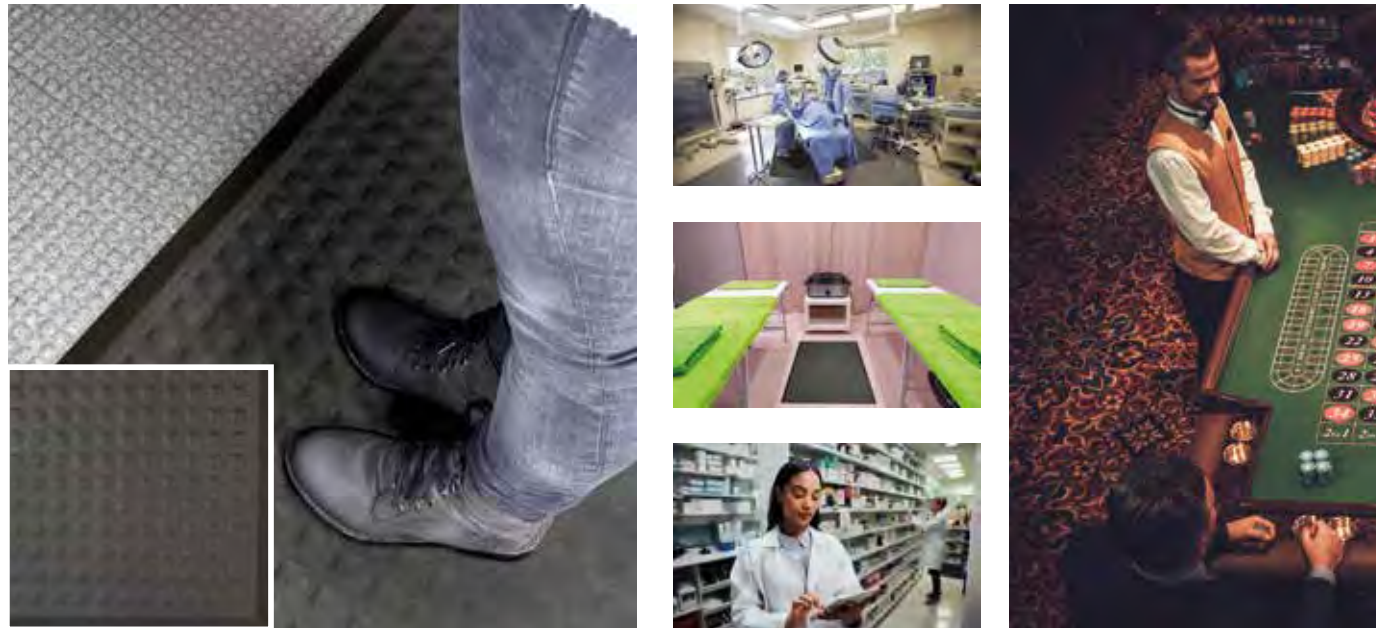
- Designed for use in wet areas as the surface texture prevents slips, the holes allow water to escape and the studded pattern on the bottom directs drainage.
- Can be transformational for employees who have to stand for long periods, as it reduces leg fatigue, along with noise.

Ultraflow mats can be more competitively priced by offering at lower service intervals (i.e. 13p.a.)

| Two Sizes Only | | | |
|----------------|--------------------|--------|----------|
| 86cm x 54cm | 0.46m ² | 3 x 2 | 17039277 |
| 86cm x 142cm | 1.14m ² | 3 x 4½ | 106379 |



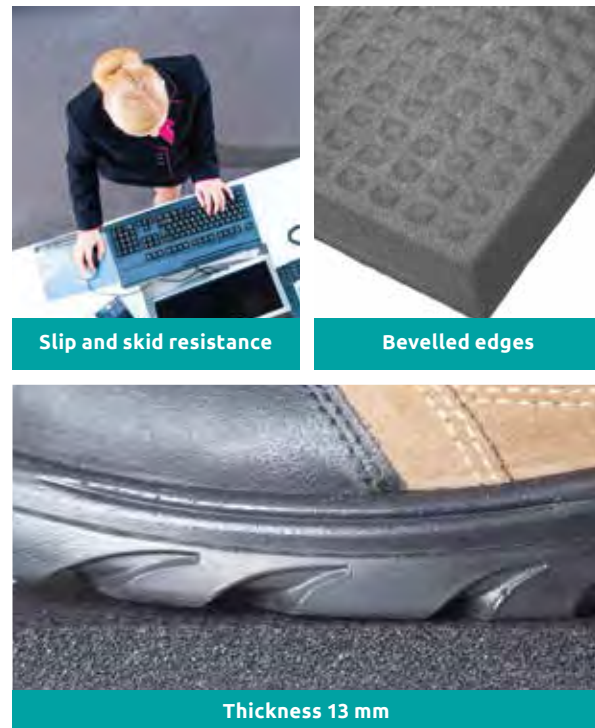
Premium anti-fatigue mats



Premium anti fatigue mats are anti-microbial, mats that can be autoclave sterilised and commercially laundered.

Key features

- Ergonomically superior anti-fatigue mat.
- Textured surface offers superior slip and skid resistance.
- Bevelled edges create a smooth floor-to-mat transition, reducing slip and falls.
- 100% Nitrile Rubber
- Anti-microbial treatment reduces odours by inhibiting the growth of germs and bacteria.
- Lightweight and easy to clean.



Available options

| Specifications | | |
|---------------------|-----------------------------------|---------|
| Standard sizes (cm) | 60x90* | 90x150* |
| Thickness | 13 mm | |
| Type | Closed cell Nitrile Sponge Rubber | |

Size Tolerance: +/- 5%
*In stock

Slip Safety Service

Reduce the risk of slip accidents

Do you have a current certificate to defend your business in case of a slip accident on your site?

Pendulum Slip testing is the standard test method used by HSE to assess wet and dry floor slipperiness. Caution Wet Floor signs do not mitigate liability on floors that are unsafe they just highlight the issue that needs addressing.

phs can undertake this testing in your premises. Providing you with a detailed analysis with recommendations for improvements.
Ensuring your premises are safe and compliant.

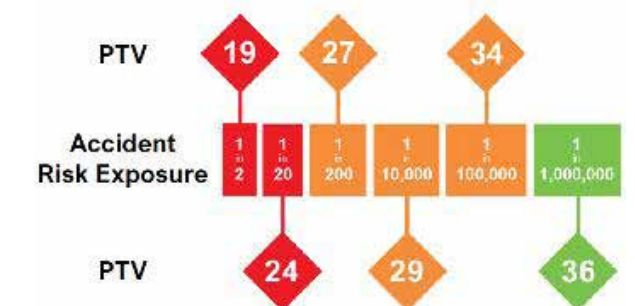
- Slips are the most common cause of accident, injury & claims.
- An average claim is £10k but the true cost of an accident is £100k+
- Insurance premiums are rising all the time and given that slips are 33% of claims, managing that risk has never been more important
- If you are able to provide evidence of compliant results, not only will you see fewer accidents, but it will help to defend claims

We conduct testing for insurers, lawyers, floor suppliers, FM companies and, of course, many businesses. Our testing includes a detailed, court-ready report, including test Chimes results, findings and recommendations.



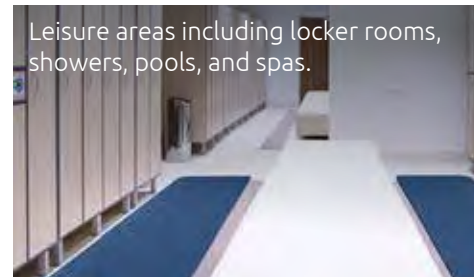
Chimes
The 6 most common reason for slips

Excluding Northern Ireland

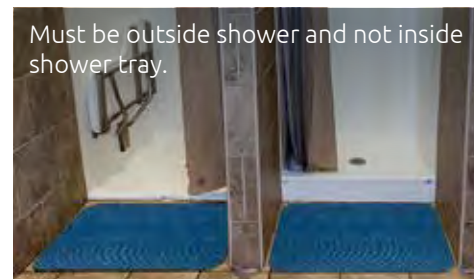


Wet area matting

Durable Wet Area Matting for indoor and outdoor use.



Leisure areas including locker rooms, showers, pools, and spas.



Must be outside shower and not inside shower tray.



Key features

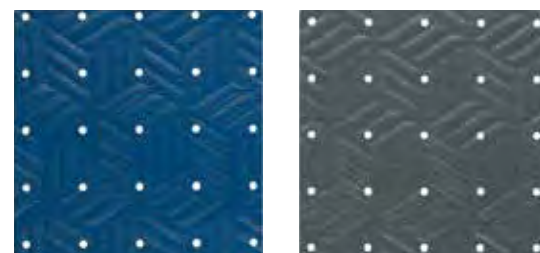
- Slip resistant for increased safety in wet area
- Comfortable for users to walk on
- Hygienically treated with anti-microbial treatment
- Made from durable closed-cell nitrile rubber that is UV resistant
- Available on a lift and lay cleaning service

Safety standards

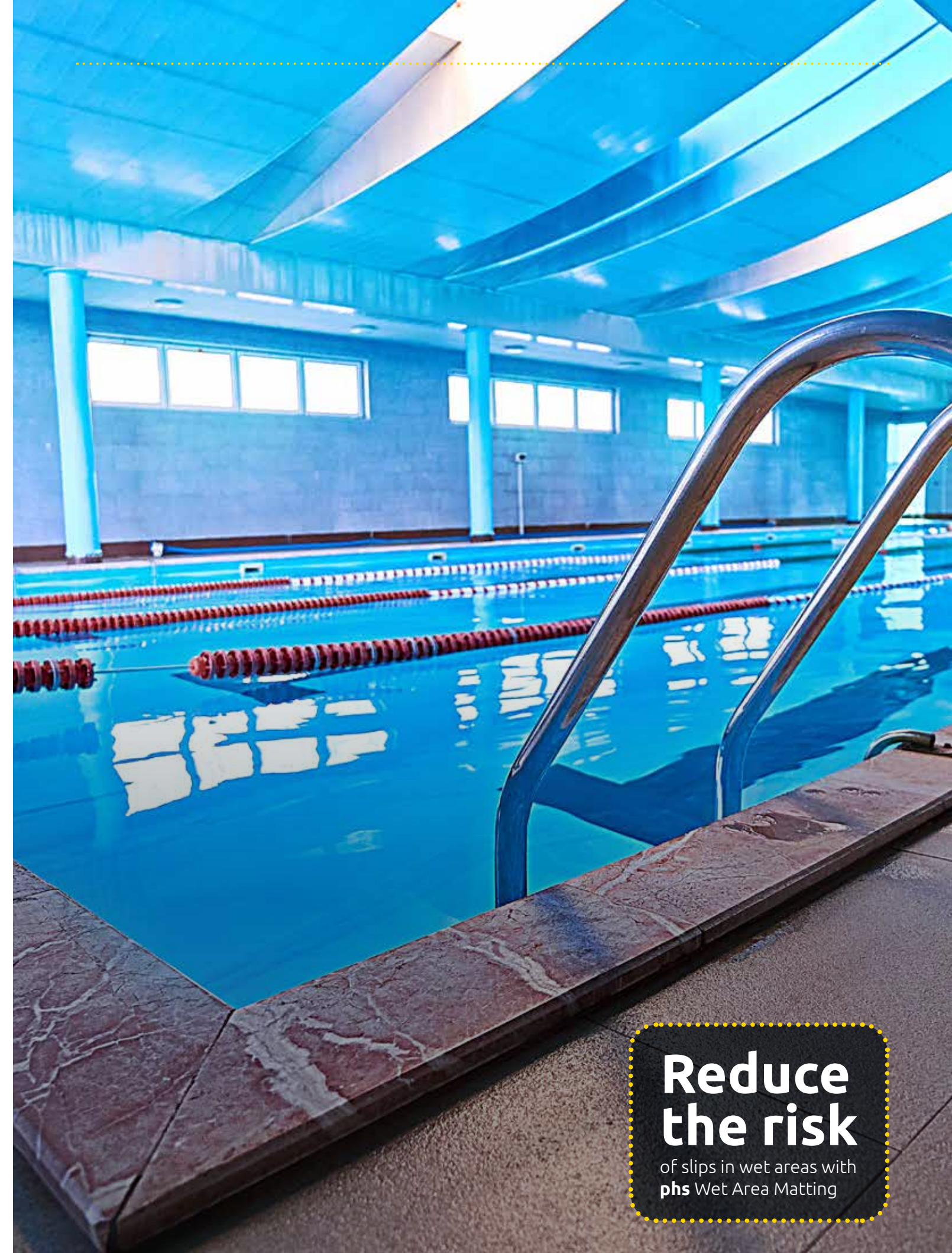
- Certified high-traction by the National Floor Safety Institute (NFSI)
- Passes flammability standard CPSC-FF1-70
- ASTM C1028-96 Static Coefficient of Friction: Dry 0.99 Wet 0.82

Available options

| Colour | Size | Product Code |
|--------|--------------|--------------|
| Blue | 60cm x 90cm | 17036513 |
| | 90cm x 150cm | 17036525 |
| | 90cm x 300cm | 17036537 |
| Grey | 60cm x 90cm | 17036549 |
| | 90cm x 150cm | 17036550 |
| | 90cm x 300cm | 17036562 |



Material: High-density, closed-cell nitrile rubber foam
Thickness: 6.35mm

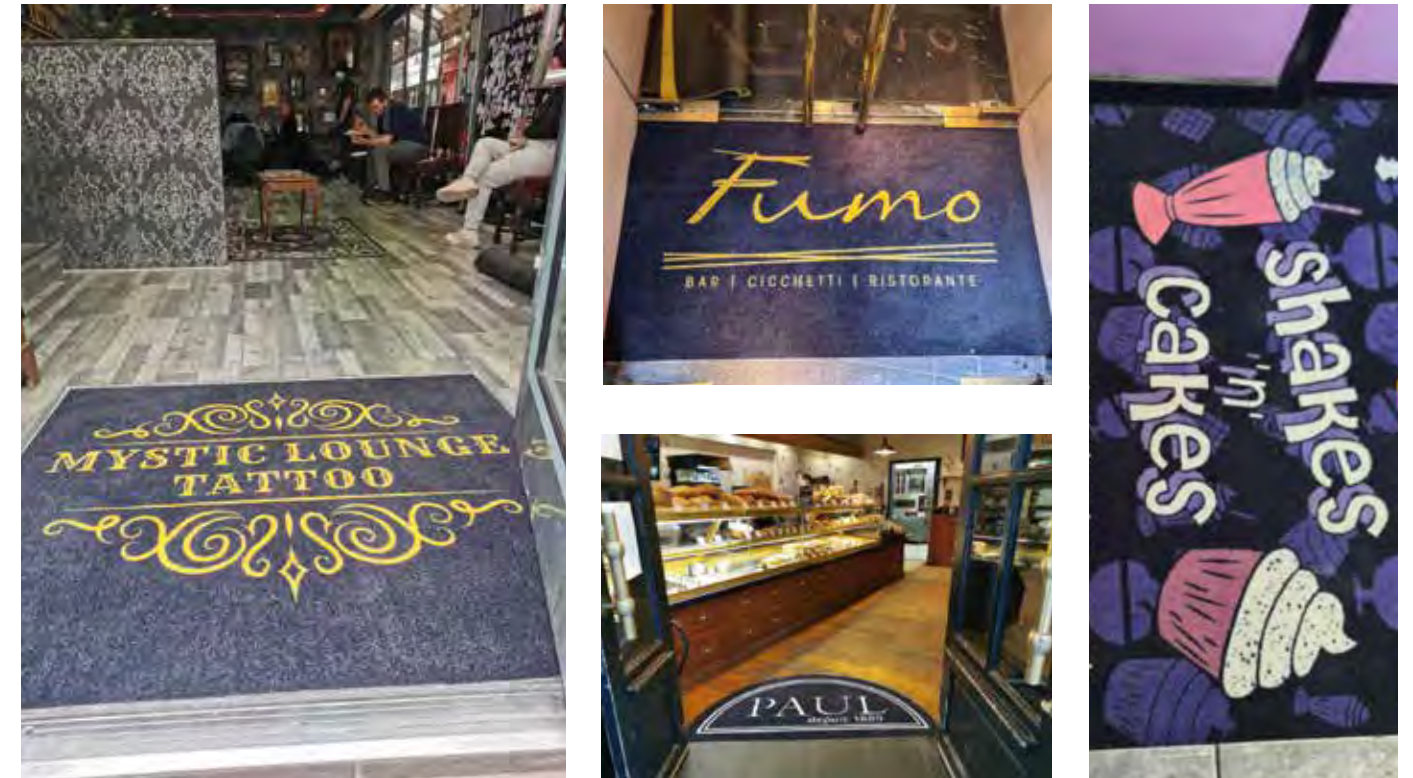


Reduce the risk
of slips in wet areas with
phs Wet Area Matting

Fitted Lift and Lay matting solutions



Logo / image – fitted mats



Key features

- Standard se vice is 26 p.a. (fortnightly)
- Monthly (13p.) & weekly (52p.a.) available
- Backing = 100% nitrile rubber DM
- otal thickness = 10-11mm
- Fire resistance = Cfl s
- Bespo e mats i.e. dedicated stock
- Antistatic = <2k
- BS8300 / D A / ADA compliant

- 100 colour choices
- Bespoke sizes are available up to max. 3.9m
- Only use dark practical background colours
- Jpeg hi resolution images are best for image mats
- Internal Use only

Options:

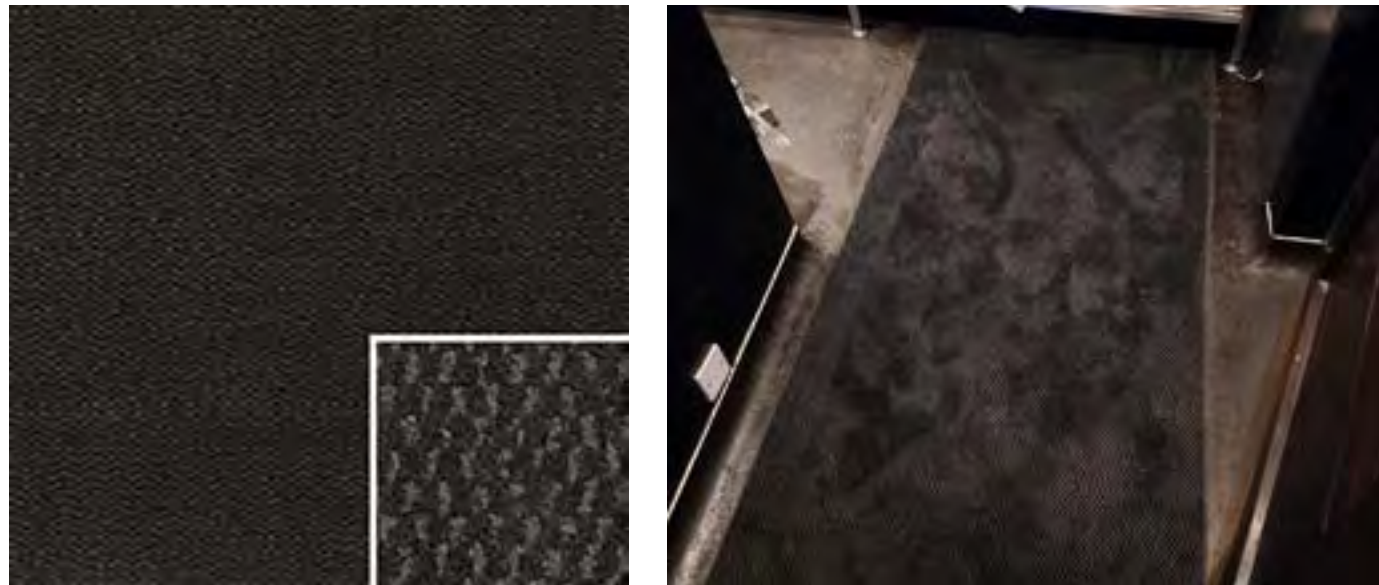
| | |
|------------------------------------|--------|
| Measures up to 1.275m ² | 006818 |
| Measures up to 2.07m ² | 006819 |
| Measures up to 2.76m ² | 006820 |
| Measures up to 3.75m ² | 007479 |
| Measures up to 3.9m ² | 006821 |



DID YOU KNOW?

On average an entrance mat absorbs so much material that it becomes ineffective after two weeks of use.

Ultra plus fitted mats



Also available in a fitted lift and lay mat option.

Key features

- Standard service is 26 p.a. (fortnightly)
- Monthly (13p.a.) & weekly (52p.a.) available
- Backing = 100% nitrile rubber
- Total thickness = 10-11mm
- Fire resistance = Dfl-s1
- 20mm anti-trip rubber border all around
- Antistatic = <2kV
- Yarn = 100% ECONYL®
- BS8300 / DDA / ADA compliant
- Colours: graphite only
- Gripper or smooth backed choice
- 32% more soil/moisture capture than standards
- Ideal sink mat for use in washrooms
- Heavy duty micromix pile 66%/33%
- Indoor use only

Available options

| Backing options: | Gripper or smooth |
|--|-------------------|
| Bespoke Ultra Plus – Fitted – Up to 1.275M | 17036203 |
| Bespoke Ultra Plus – Fitted – Up to 2.07M | 17036215 |
| Bespoke Ultra Plus – Fitted – Up to 2.76M | 17036227 |
| Bespoke Ultra Plus – Fitted – Up to 3.75M | 17036239 |
| Bespoke Ultra Plus – Fitted – Up to 3.9M | 17036240 |

NB - Maximum width available is 140cm for fitting

Maximum width is 150cm you can go any size in the opposite direction as long as you are within 3.9sqm. Also available fitted in any matwell upto 3.9sqm

32% more absorbent than a standard mat

Product Specification

| | |
|-----------|--|
| Sizes | 120x85cm, 150x85cm, 180x115cm, 240x85cm, 350x115cm |
| Thickness | 7-12mm |
| Colour | Graphite Grey |



Planet Range fitted mats



Our planet range of mats offer limitless design opportunities. From creating a complete brand experience, to providing additional health and safety signage.

Key features:

- New pattern developed to compliment dark grey, blue, brown and red in our forma and foris colour range
- Can be used as a patterned mat or logo mat
- Please note that the planet range of fleck patterned colours are not an exact match to our Forma and Foris range of colours due to the different textile used in the product
- Available in any bespoke size up to 4.2sqm (loose-lay) and up to 3.9sqm (fitted)

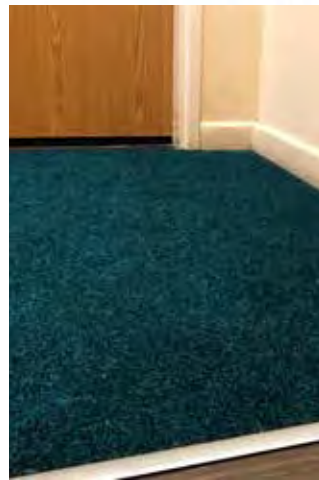
Options:

| | |
|---|----------|
| Planet Range - Fitted - Up to 1.275M | 17035284 |
| Planet Range - Fitted - Up to 2.07M | 17035296 |
| Planet Range - Fitted - Up to 2.76M | 17035302 |
| Planet Range - Fitted - Up to 3.75M | 17035314 |
| Planet Range - Fitted - Up to 3.9M | 17035326 |
| Planet Range Logo Mat - Fitted - Up to 1.275M | 17035338 |
| Planet Range Logo Mat - Fitted - Up to 2.07M | 17035340 |
| Planet Range Logo Mat - Fitted - Up to 2.76M | 17035351 |
| Planet Range Logo Mat - Fitted - Up to 3.75M | 17035363 |
| Planet Range Logo Mat - Fitted - Up to 3.9M | 17035375 |

Also available fitted in any matwell upto 3.9sqm



Printed plain colour – fitted mats



Measure the matwell and select the size which will cover the area you want to install.

| Options: | |
|------------------------------------|--------|
| Measures up to 1.275m ² | 107956 |
| Measures up to 2.07m ² | 107957 |
| Measures up to 2.76m ² | 107958 |
| Measures up to 3.75m ² | 107959 |
| Measures up to 3.9m ² | 107960 |

Maximum width or length is 185cm you can go any size in the opposite direction as long as you are within 3.9sqm

NB. Fitted mats can only be installed into an existing matwell or into carpeted areas. They can not be installed into a hard floor area.

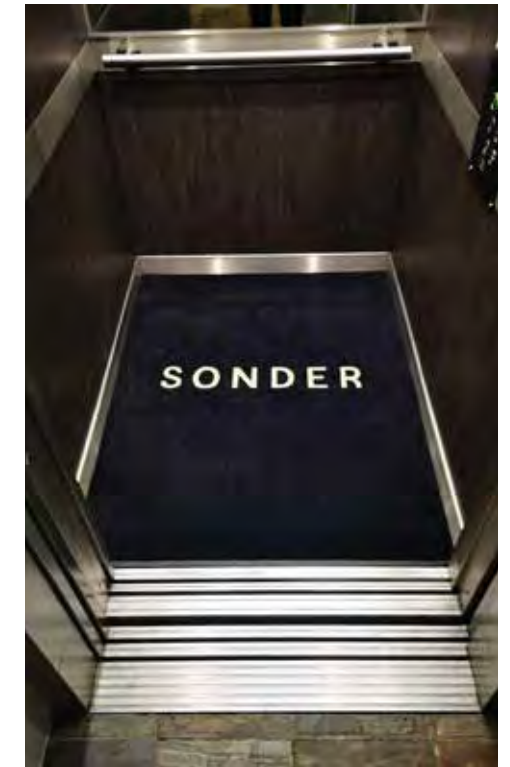
Key features

- Standard service is 26 p.a. (fortnightly)
- Monthly (13p.a) & weekly (52p.a.) available
- Backing = 100% nitrile rubber DMS
- Total thickness = 10-11mm
- Fire resistance = Cfl s1
- Bespoke mats i.e. dedicated stock
- Antistatic = <2kV
- BS8300 / DDA / ADA compliant

- 100 colour choices
- Bespoke sizes are available up to max. 3.9m
- Internal use only
Avoid using light colours as mats need to be practical



Lift car mats – logo / image



Key features

- Standard service is 26 p.a. (fortnightly)
- Monthly (13p.a) & weekly (52p.a.) available
- Backing = 100% nitrile rubber DMS
- Total thickness = 10-11mm
- Fire resistance = Cfl s1
- Bespoke mats i.e. dedicated stock
- Antistatic = <2kV
- BS8300 / DDA / ADA compliant
- 100 colour choices
- Bespoke sizes are available
- Only use dark practical background colours
- Jpeg hi resolution images are best for image mats
- Internal Use only



TWISTING & TURNING...

To press Lift buttons make Lift Cars an ideal place to fit a mat

| Options: | |
|------------------------------------|----------|
| Measures up to 1.275m ² | 17022897 |
| Measures up to 2.16m ² | 17022903 |
| Measures up to 2.88m ² | 17022915 |
| Measures up to 3.6m ² | 17022927 |
| Measures up to 3.96m ² | 17022939 |



Permanent fitted matting solutions



ECONYL®
Made with 100% Regenerated Nylon

Forma HD – plain

Fitted Entrance Matting System



Forma HD – logo

Forma incorporating a Logo Mat



Forma HD ideal for heavy duty areas, will fit any size area with no limitation on size. Adhered to floor, so no movement or shrinkage issues. The 12mm Forma version can be surface mounted without a matwell as long as there is door clearance. Forma HD is for internal use areas only.

Forma HD serviced on site quarterly and can incorporate a inset fitted logo mat as an optional extra which is serviced fortnightly by phs service driver.

Always confirm with the customer the size of their fitted logo mat and where they would like it positioned.

Key features

- Standard service is 4 p.a. (quarterly)
- Serviced on site
- Yarn = 100% ECONYL®
- Backing = 100% recyclable PVC
- 12mm option shallow wells and surface mounted
- 18mm option deep wells 18mm and above
- Permanently fitted adhered down on site
- Fire resistance = Bfl s1
- Antistatic = <2kV
- Wear resistance heavy to severe
- BS8300 / DDA / ADA compliant
- 5 colour choices
- Indoor use only

Please Note: 10cm is added to the size of each mat in both directions as standard procedure by the logo's team to give the fitter the material required to cut. If Screeding, Plywood, PVC or Aluminium ramped edging is required use code 005833



| Options: | FHD 12mm | FHD 18mm |
|------------------------------------|----------|----------|
| Measures up to 2.23m ² | 108156 | 136296 |
| Measures up to 3.34m ² | 108157 | 136297 |
| Measures up to 4.46m ² | 108158 | 136298 |
| Measures up to 5.57m ² | 108159 | 136299 |
| Measures up to 6.69m ² | 108160 | 136300 |
| Measures up to 7.8m ² | 108161 | 136301 |
| Measures up to 8.92m ² | 108162 | 136302 |
| Measures up to 10.03m ² | 108163 | 136303 |
| Measures up to 11.15m ² | 108164 | 136304 |
| Measures up to 13.94m ² | 108165 | 136305 |
| Measures up to 18.58m ² | 108166 | 136306 |
| Measures up to 24.16m ² | 108167 | 136307 |
| Measures up to 30.66m ² | 108168 | 136308 |
| Measures up to 37.16m ² | 108169 | 136309 |
| Measures up to 44.60m ² | 108170 | 136310 |
| Measures up to 55.75m ² | 108171 | 136311 |

Quadra HD - Plain & Logo

Fitted Entrance Matting System - Internal only



Quadra HD serviced on site quarterly and can incorporate a inset fitted logo mat as an optional extra which is serviced fortnightly by phs service driver.

Always confirm with the customer the size of their fitted logo mat and where they would like it positioned.

Key features

- Standard service is 4 p.a. (quarterly)
- Serviced on site
- Yarn = 100% ECONYL®
- Backing = 100% recycled PVC
- 12mm option shallow wells and surface mounted
- Permanently fitted adhered down on site
- Wear resistance heavy to severe
- BS8300 / DDA / ADA compliant
- Standard Colour: Anthracite 607to ordeer stocked
- Other colours available at additional cost
- Internal use only

| Options: | Quadra HD 12mm |
|------------------------------------|----------------|
| Measures up to 3m ² | 17038911 |
| Measures up to 4.5m ² | 17038923 |
| Measures up to 6m ² | 17038959 |
| Measures up to 7.5m ² | 17038972 |
| Measures up to 9m ² | 17038984 |
| Measures up to 10.5m ² | 17039186 |
| Measures up to 12m ² | 17039198 |
| Measures up to 13.5m ² | 17039204 |
| Measures up to 15m ² | 17039216 |
| Measures up to 16.5m ² | 17039228 |
| Measures up to 18m ² | 17039230 |
| Measures up to 19.5m ² | 17039241 |
| Measures up to 21m ² | 17039253 |
| Measures up to 22.5m ² | 17039265 |
| Measures over 22.5m ² + | See Pricing |

Please Note: If Screeding, Plywood, PVC or Aluminium ramped edging is required use code 005833



Tergo HD

Fitted Entrance Matting System – must be under a canopy



Tergo can also be combined with Forma, in internal areas to provide a scrape and absorb effect.

Tergo in an exterior sheltered matwell.

Ideal for heavy duty areas, will fit any size area no limitation on size, adhered to floor so no movement or shrinkage issues. Tergo HD is for external use areas under a canopy. Same textile as Tuff mats



Key features

- Standard service is 4 p.a. (quarterly)
- Serviced on site
- Yarn = 100% ECONYL®
- Backing = 100% recyclable PVC
- 12mm option shallow wells and surface mounted
- 18mm option deep wells 18mm and above
- Permanently fitted adhered down on site
- Fire resistance = Bfl s1
- Antistatic = <2kV
- Wear resistance heavy to severe
- BS8300 / DDA / ADA compliant
- Single colour choice = grey
- External use under a canopy only

Please Note: If Screeding, Plywood, PVC or Aluminium ramped edging is required use code 005833



| Options: | FHD 12mm | FHD 18mm |
|------------------------------------|----------|----------|
| Measures up to 2.23m ² | 16459386 | 16459544 |
| Measures up to 3.34m ² | 16459398 | 16459556 |
| Measures up to 4.46m ² | 16459404 | 16459568 |
| Measures up to 5.57m ² | 16459416 | 16459570 |
| Measures up to 6.69m ² | 16459428 | 16459581 |
| Measures up to 7.8m ² | 16459430 | 16459593 |
| Measures up to 8.92m ² | 16459441 | 16459600 |
| Measures up to 10.03m ² | 16459453 | 16459611 |
| Measures up to 11.15m ² | 16459465 | 16459623 |
| Measures up to 13.94m ² | 16459477 | 16459635 |
| Measures up to 18.58m ² | 16459489 | 16459647 |
| Measures up to 24.16m ² | 16459490 | 16459659 |
| Measures up to 30.66m ² | 16459507 | 16459650 |
| Measures up to 37.16m ² | 16459519 | 16459572 |
| Measures up to 44.60m ² | 16459520 | 16459584 |
| Measures up to 55.75m ² | 16459532 | 16459596 |

Foris – fitted

Internal only



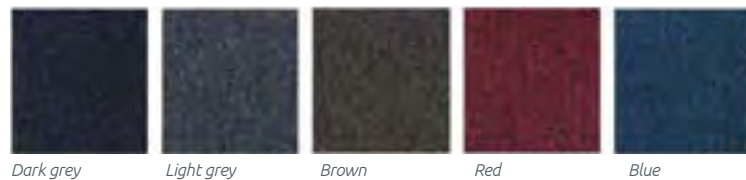
Foris is designed as a secondary matting system which would usually come after a Forma HD matwell or in alternatively in a shallow matwell which can not take Forma. Foris is available in the same colours as the Forma HD and is 100% ECONYL®.

Foris is serviced on site quarterly and can incorporate a inset fitted logo mat as an optional extra which is serviced fortnightly by phs service driver.

If you are supplying a inset logo fitted within Foris always confirm with the customer the size of their fitted logo mat and where they would like it positioned.

Key features

- Standard service is 4 p.a. (quarterly)
- Serviced on site
- Yarn = 100% ECONYL®
- Backing = 100% recyclable PVC
- 9-10mm shallow wells and surface mounted
- Permanently fitted adhered down on site
- Fire Resistance = Bfl s1
- Antistatic = <2kV
- Wear resistance medium to heavy
- BS8300 / DDA / ADA compliant
- 5 colour choices
- Internal use only

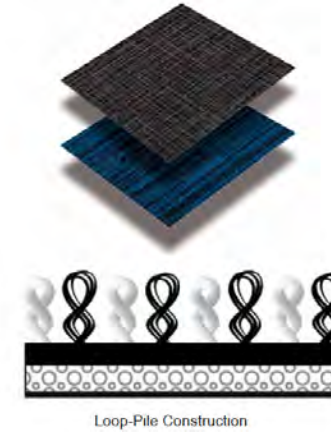


Please Note: If Screeding, Plywood, PVC or Aluminium ramped edging is required use code 005833

| Options: | Foris 10mm |
|------------------------------------|------------|
| Measures up to 2.23m ² | 16459192 |
| Measures up to 3.34m ² | 16459209 |
| Measures up to 4.46m ² | 16459210 |
| Measures up to 5.57m ² | 16459222 |
| Measures up to 6.69m ² | 16459234 |
| Measures up to 7.8m ² | 16459246 |
| Measures up to 8.92m ² | 16459258 |
| Measures up to 10.03m ² | 16459260 |
| Measures up to 11.15m ² | 16459271 |
| Measures up to 13.94m ² | 16459283 |
| Measures up to 18.58m ² | 16459295 |
| Measures up to 24.16m ² | 16459301 |
| Measures up to 30.66m ² | 16459313 |
| Measures up to 37.16m ² | 16459325 |
| Measures up to 44.60m ² | 16459337 |
| Measures up to 55.75m ² | 16459349 |

PHS Smart Step – fitted

Internal only

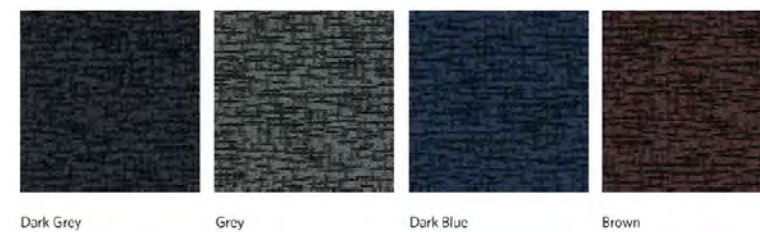


PHS Smart Step is an exceptionally versatile modular entrance matting system that creates a stunning first impression in spaces that need to create an effective barrier against the elements.

Designed to provide a superior combination of performance and aesthetics, the ECONYL® dual-fibre loop polyamide yarn construction will stop dirt and moisture at the door, while allowing easy removal during maintenance. The tiles are supplied in 50cm x 50cm size and in a 9.9mm gauge with each box containing 12 tiles which assemble to 3m².

Key features

- Standard service is 4 p.a. (quarterly)
- Serviced on site
- Yarn = 100% ECONYL®
- Backing = 100% PVC Free
- 9.9mm shallow wells and surface mounted
- Permanently fitted adhered down on site
- Fire Classification = Cfl s1
- Antistatic = <3.5kV
- Wear resistance medium to heavy
- BS8300 / DDA / ADA compliant
- 4 colour choices
- Internal use only



Dark Grey Grey Dark Blue Brown

| Options: | Smart Step 9.9mm |
|------------------------------------|------------------|
| Measures up to 2.30m ² | 17038030 |
| Measures up to 3.34m ² | 17038042 |
| Measures up to 4.46m ² | 17038054 |
| Measures up to 5.57m ² | 17038066 |
| Measures up to 6.69m ² | 17038078 |
| Measures up to 7.8m ² | 17038080 |
| Measures up to 8.92m ² | 17038091 |
| Measures up to 10.03m ² | 17038108 |
| Measures up to 11.15m ² | 17038110 |
| Measures up to 13.94m ² | 17038121 |
| Measures up to 18.58m ² | 17038133 |
| Measures up to 24.16m ² | 17038145 |
| Measures up to 30.66m ² | 17038157 |
| Measures up to 37.16m ² | 17038169 |
| Measures up to 44.60m ² | 17038194 |
| Measures up to 55.75m ² | 17038200 |



Megahold & Anka-pad

Internal only

Megahold is a specialist backing option available from PHS specifically designed for hard floor surface to improve mat stability and help prevent movement. In combination with our unique Anka-pad system, the Megahold also solves mat movement problems on textile surfaces such as carpets.



➤ Ideal for heavy traffic areas such as retail, shopping centres and airports



Installation of Megahold™ Mats

New mats should be washed before use. Ensure that the back of the mat is free of dirt and water.

Walk across the mat to activate suction cups.

Mat in use - resistant to movement.

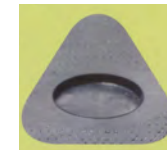


ECONYL®
Made with 100% Regenerated Nylon

| Options: | Code |
|-------------------------------------|----------|
| Ultra Plus - Megahold - 85 x 150cm | 17037890 |
| Ultra Plus - Megahold - 115 x 180cm | 17037906 |
| Ultra Plus - Megahold - 85 x 300cm | 17037918 |

| Options: | Code |
|-------------------------------|----------|
| Logo - Megahold - 85 x 150cm | 17037920 |
| Logo - Megahold - 115 x 180cm | 17037931 |
| Logo - Megahold - 85 x 300cm | 17037943 |

| Options: | Code |
|--------------------------------|----------|
| Plain - Megahold - 85 x 150cm | 17037955 |
| Plain - Megahold - 115 x 180cm | 17037967 |
| Plain - Megahold - 85 x 300cm | 17037979 |



Megahold unique suction cup design

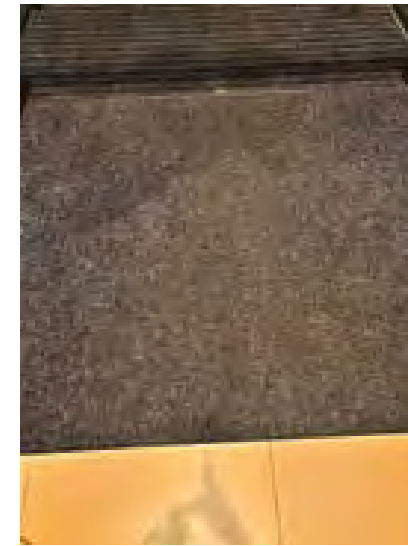


Megahold with Anka-Pad

| Carpet Option: | Code |
|------------------------------|----------|
| Anka-Pad Medium - 70 x 130cm | 17037980 |
| Anka-Pad Large - 95 x 160cm | 17037992 |

Fixed entrance mat cleaning

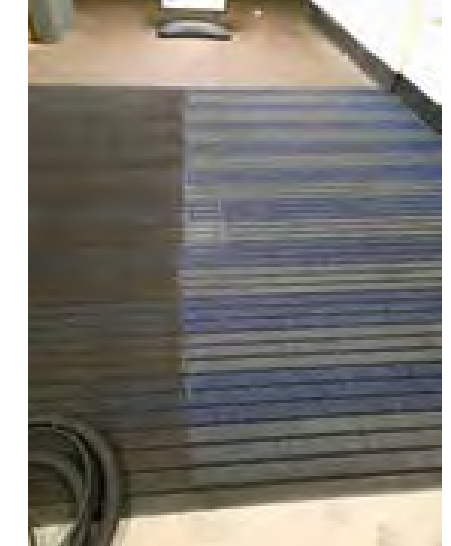
Internal only



Before cleaning



After cleaning



Our team of mat cleaners will attend your site and give a regular clean to customers' own fixed entrance matting. For areas larger than 30 sqm, please contact the floorcare team. Cleaning matting prolongs its life and we can offer our own replacement products when mats lose their effectiveness. Without regular deep cleaning, fixed entrance mats will wear quicker and be less effective as a barrier to dirt and water.

For confirmation on whether your matting is able to be serviced, please send a picture to our Floorcare team.



➤ Key features

- Standard service is 4 p.a. (quarterly)
- Serviced on site
- Indoor mats only
- Best results on mats with textile component
- Avoid all coir matting
- Effective on most types of entrance mat

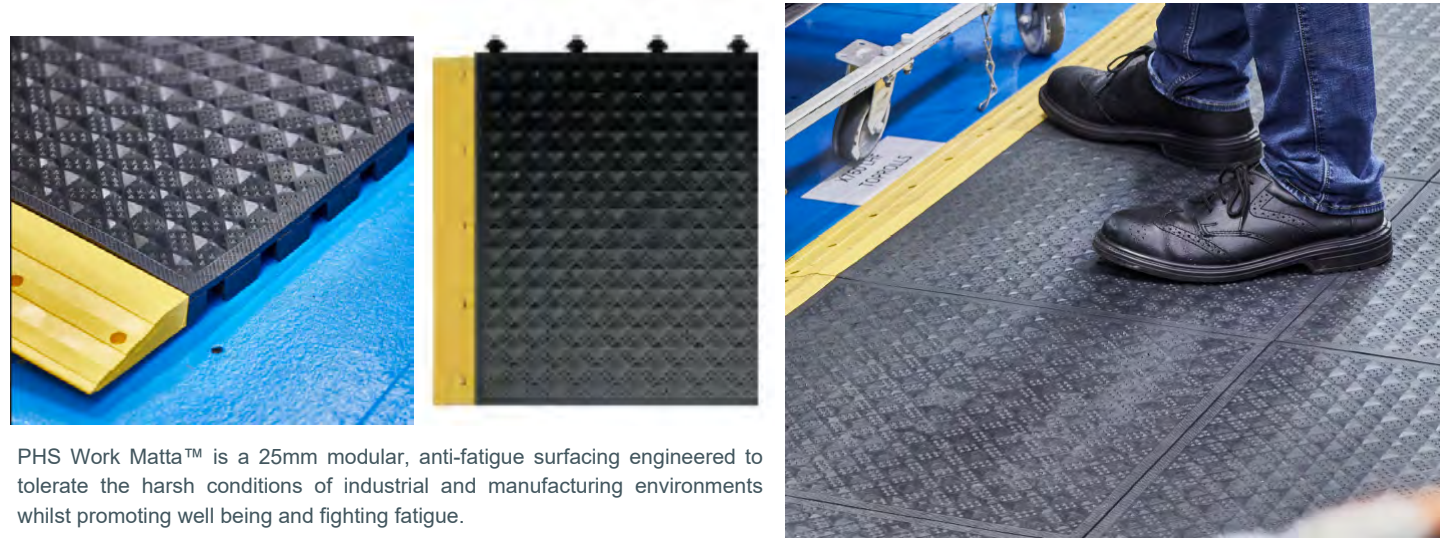
| Options: | Code: |
|---|----------|
| Fixed Entrance Matting Clean less than 10sqm | 16408135 |
| Fixed Entrance Matting Clean less than 10-30sqm | 16408147 |





Our recycled products are made from at least 85% recycled materials.

PHS Work Matta™ – fitted

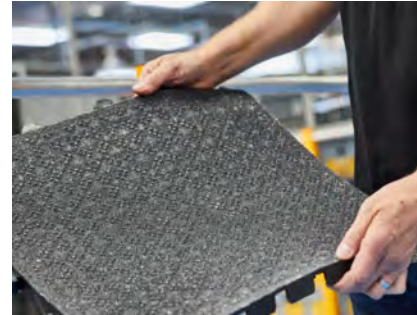


PHS Work Matta™ is a 25mm modular, anti-fatigue surfacing engineered to tolerate the harsh conditions of industrial and manufacturing environments whilst promoting well being and fighting fatigue.

Key features

- Annual safety Inspection (1 pa)
- 3 or 5 Year Agreements
- Made from 85%+ recycled content
- End of life recyclable product
- ASTM, ADA & UFAS Accessibility Standards
- Wear resistance heavy to extreme
- Available in Grit Finish for oily environments
- Available in open or closed formats

| | |
|---------------------------------|------------------------|
| Product Code: | Work Matta 25mm |
| Spw Mark Gamble or Paul Hipkiss | 17037256 |



Grit Finish for Oily environments

Tile Size: 500mm x 500mm
(50cm x 50cm)
Edge size: 100mm x 500mm
(10cm x 50cm)

Survey required by Floorcare Specialist

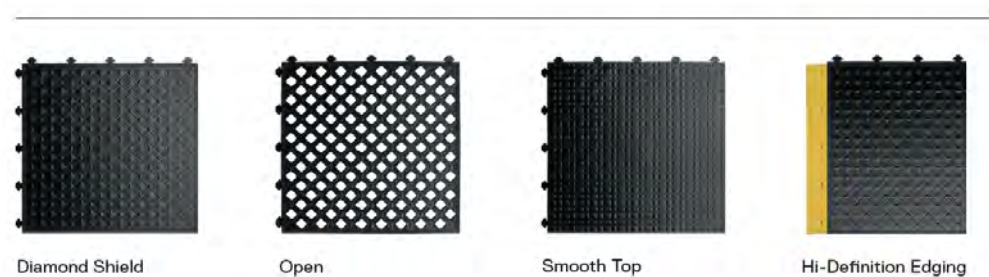


All Work Matta™ flooring tiles utilise a unique compression column construction, specifically engineered to encourage proper body alignment, while promoting a calculated degree of movement or 'sway'. This almost imperceptible motion stimulates the muscles and promotes the efficient circulation of blood through the veins – especially in the legs – which is key to preventing worker fatigue and discomfort.

WHY ARE EERGONOMICS SO IMPORTANT?

Oxygenated blood is pumped by the heart, through arteries, around our body which uses the oxygen as fuel. The blood then returns, via the veins, to our heart and lungs for 'refueling' and the process begins again with re-circulation of oxygenated blood through the arteries. Blood pressure and the normal contracting and relaxing of muscles around veins as we move, facilitates the return journey of blood through the one-way valve system in veins. This process can be inhibited when we have to stand on a hard surface or our movement is restricted for prolonged periods. Work Matta™ ergonomic flooring is designed to help promote efficient blood circulation.

SURFACE OPTIONS



Symbols – explained



Our Lift and Lay Service provides a perfect end to end system where our service driver collects the dirty mat from a premises whilst immediately replacing it with an identical clean mat. The dirty mats are then taken to our specialist mat processing plants around the UK to be thoroughly and hygienically cleaned and dried ready for their next delivery. The maximum H&S size we can process is 4.02sqm via this service.

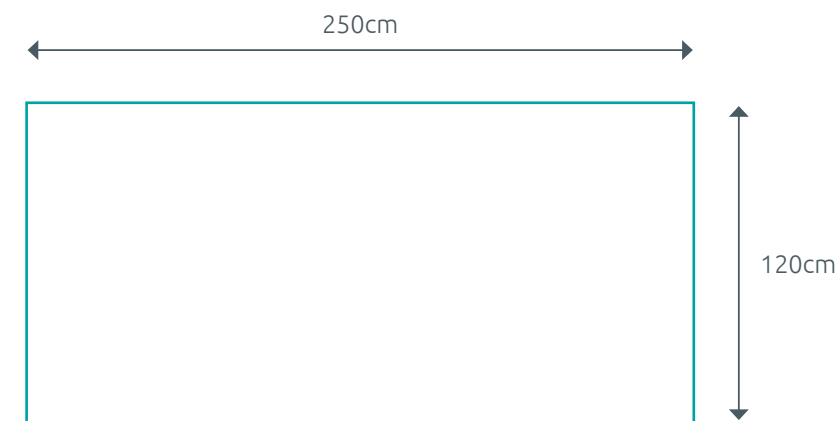


Our On-Site Service provides a specialist on-site hot water extraction process clean on a quarterly basis for mats that are permanently fitted on site. Between services the daily cleaning i.e. vacuuming etc. is carried out by the client's own normal cleaning staff. These mats are typical fitted into matwell or exceptionally large mats such as our Foris range which exceed the normal 4.02sqm size.



The majority of our flooring range complies with BS8300 / DDA / ADA building regulations. Furthermore our Principle mats are all designed specifically to be a full 2m long to cater for the circumference wheel of a wheelchair.

Working out the sqm



$$250\text{cm} \times 120\text{cm} = 2.5\text{m} \times 1.2\text{m} = 3\text{sqm}$$



phs Group

- Wash
- Work
- Treat
- Health
- Speci

Matting

5 RFE

www.phs

029 2



phs Group, Block B, Western Industrial Estate
Caerphilly CF83 1XH

029 2080 9090 | productinfo@phs.co.uk | phsgroup.co.uk

phs Group a company registered in England & Wales. Company Registration No. 05384799

